



LEESBURG HIGH SCHOOL BAND
STYLE TENACITY INTEGRITY NOBILITY GROWTH



2011-2012

HANDBOOK



Please sign and return this page.

I (*printed parent name*) _____ have reviewed the LHS Band Handbook (available at www.swarmofsound.com). I understand that all band members will abide by the rules in this handbook. I will ensure that my child follows the rules in the handbook. I understand that there is a band website (www.swarmofsound.com) and that important information is contained on that site. I understand the Fair Share system, as described in the LHS Band Handbook.

Parent Signature

Date

I (*printed student name*) _____ have reviewed the LHS Band Handbook with my parent and fully understand the guidelines. I understand that all band members will abide by the rules in this handbook. I will ensure that my I follow the rules in the handbook. I understand that there is a band website (www.lhsbands.com) and that important information is contained on that site. I understand that a student must be present at Band Camp to participate next year. I understand the Fair Share system, as described in the LHS Band Handbook. I understand that Fair Share is my responsibility and I promise to not “hit my parents up” for money at the last minute.

Student Signature

Date

Please sign and return this page.

Please sign and return this page.

Grading Policy Acceptance Letter

We are glad that you are part of the rich tradition that is the Leesburg High School Band Program. Because we care about a quality experience for our students, we feel that it is important to communicate some rules and expectations for the band classes.

The whole concept of grading for the bands is based on one simple thought. “If you show up prepared and try hard, you will get an A.” The interpretation of this statement is straightforward: students will be graded on their punctuality, attendance, attitude, equipment management, and their progress as a musician. There will be some playing/marching tests and students will be expected to achieve at a high level. However, progress from beginning to end of the grading period is taken heavily into account. **Everyone who is putting forth the effort will improve and will be duly rewarded.**

On the other hand, if a student has an unexcused absence for a performance, he/she should expect a grade reduction of one or two letters **for the grading period depending on the nature of the performance**, a make-up assignment, and a possible loss of performance privileges. Similarly, a blatant lack of preparation for either playing or marching tests will result in a grade reduction. **Examples of invalid excuses include jobs, parties, family trips/celebrations, concerts, community/church events, etc.** If you feel that there are extenuating emergency circumstances not covered above, please call and discuss them - I am always willing to listen. Please know that I must be notified weeks, if not months in advance in order to prepare and make adjustments for such an event. **There is no excuse for waiting until the last minute to provide notification of anything other than extreme violent illness or immediate-family emergency.** To avoid any possibility of misunderstanding - if we don't have time to fill your spot with a competent marcher or player and/or your part will not be covered by someone who has had ample rehearsal time to learn your role, you have waited until the last minute and should expect a grade reduction. Please check the band calendar and resolve conflicts right away. You may email me anytime at fielderg@lake.k12.fl.us.

These guidelines are not designed to frighten anyone; they are simply stated to prevent misunderstandings. Because we are a performance team, we all must depend on each other to be there and do our part to support that team. Learning to be there for each other is a good lesson, and there are consequences for those who, on rare occasion, do not demonstrate an understanding of that lesson.

Sometimes parents/students assume that because a student has attended most of the band events, he or she is entitled to miss something, a “get out of jail free card,” if you will. Or, a parent or student will determine that a particular event is not as important as another, or a parent will say “it is not my child's fault, it is mine, I forgot,” or the most unfortunate excuse of all: “Other people are missing events and pretending to be sick, so the guidelines don't apply, at least I'm being honest...” As ridiculous as these excuses sound, I am not making them up. Every year the above excuses are tried several times. I have included them here to avoid any possibility of misunderstanding. **Please do not make these assumptions, because they will result in a grade reduction for the student for the grading period.**

Excellence does require sacrifice at times and there may be a need for a student to make a sacrifice to contribute to his/her team. This is a good lesson, because as we all know, in the “real world” we must make choices on a daily, if not hourly basis. Many parents have made plenty of sacrifices for their children and I'm sure will appreciate the reinforcement of these principles. *After all, how many times do we wish students knew the value of a dollar and that hard work produces results?* We hope to instill the ideal that achievement is worth the investment of hard work and of some sacrifice, that there is an inner peace and strength generated by the journey toward a worthwhile goal, and finally, that one achieves satisfaction and joy through learning, growing, and helping to support others.

Again, welcome to the program and on behalf of the entire band staff, I wish you success in all of your school endeavors!

Gabriel Fielder, Director of Bands – LHS
Office: (352) 728-3739 Email: fielderg@lake.k12.fl.us

I have read the grading policy and understand how student grades are determined in band.

Parent _____

Student _____

Please sign and return this page.

I am responsible for my behavior and the results of that behavior.

I am responsible for what I become in life.

Life does not accept excuses.

I will not let my need to be accepted by others

Keep me from doing what is right.

I am somebody.

Losers let it happen, winners make it happen.

Therefore, when faced with a mountain, I will not quit.

I will keep on striving until I climb over, find a pass through,

Tunnel underneath or simply stay and turn the mountain into

A gold mine...

I will do my best. I know I can. I am a winner.

I am somebody.

I am an integral part of the

Leesburg “Swarm of Sound”

S.T.I.N.G.

The principals by which we operate...as a band...as individuals...

Style

To demonstrate class and respectability through frustrations and successes. Having a sense of style in performing and playing as a band member demonstrates that you are more than just a trained performer, it means you are a **MUSICIAN**. To be respected you must respect others – in respecting others you show class and **STYLE**.

Tenacity

To be tenacious is to demonstrate the highest level of determination. Determination breeds success. Attack a difficult situation as though it were a mountain to be climbed and not a wall standing in the way. To be tenacious is to press continually forward and never settle for “just okay” or “good enough.” Hard work and **TENACITY** will take you far in everything you do.

Integrity

Integrity is having the guts to be honest. Lying, cheating, and doing a half-way job may be easier than being honest, but they are not as fulfilling. By having **INTEGRITY** you demonstrate that you are better than the average person. You are smart enough to know what is right. **INTEGRITY** is doing what is right and good and just when no one is looking.

Nobility

It is easy to follow the crowd, harder to be an individual. Demonstrating **NOBILITY** is having the class to be respectful of everyone around you, especially those not as successful or talented as you may be. To be noble, is to show that you care about the well-being of others. To be noble is to clap loudly for a good performance and clap loudest for a bad performance. Showing **NOBILITY** is having the courage to be a nice person and to never talk behind another individual's back.

Growth

To demonstrate **GROWTH** is to move continually forward in everything we do as people and as musicians. Never allow yourself to make the same mistake twice. Be someone new tomorrow and leave yesterday behind. Every single time you repeat something, improve one thing about it. Take two steps forward and never take a step back. Question everything...

Once a Leesburg Band Member, always a Leesburg Band Member. Never forget the friends made or the lessons learned and always uphold the principals of S.T.I.N.G.

ACADEMIC ELIGIBILITY/COMMITMENT TO BAND PROGRAM

In order to participate in Band activities, a Band student must maintain a cumulative G.P.A. of 2.0 or higher.

ALL CLASSES RUN FOR A FULL YEAR, THERE IS NO SEPARATION OF CONCERT/MARCHING SEASON.

50/50 Policy with Athletics – Any student involved in a school sponsored extra-curricular sport or activity where a practice conflicts with part or all of band practice, must divide the conflicting time in half.

In order for 50/50 to be approved, a student must:

- *Sit down with both the coach and the band director with the calendar conflicts prepared on a list well before making a commitment*
- *Be flexible*
- *Communicate with director, coach, and parents*
- *Give equal priority to both.*

OVERVIEW OF EXPECTATIONS

A student who earns an “A” in band will demonstrate a high level of excellent as indicated below. Essential Components to an “A” in band are:

- On-time attendance for all classes, rehearsals, and performances.
- Be musically and logistically prepared for rehearsals and performances.
- Keep his/her instrument/equipment in performance condition.
- Understand the duties of the Officers so that he/she may work with them and not against them.
- Practice regularly at home (three hours per week minimum) and study privately if at all possible.
- Keep the band facility neat, clean, and free of litter.
- Keep up with and be responsible for the music/equipment issued to him/her.
- Follow and be familiar with all expectations set forth in this Handbook.

Failure to observe any of the above will result in a grade reduction as stipulated in the signed grading policy at the front of this manual.

INDIVIDUAL ACTIVITIES

- **Private instruction above and beyond the classroom curriculum is an expectation of each member** (where possible financially)
- **All-State Bands** – This group is selected by audition. The audition is held in September of each school year. Audition materials are made available in May of the preceding year are available at www.flmusiced.org/fba. Students who qualify will travel to the Florida All-State Clinic in Tampa in early January. They will rehearse with top students from across the State and present a Concert at the end of the clinic.
- **All-District Band** – The group is selected by audition. They will rehearse with top students from the entire FBA District and present a concert in the spring.
- **All County Band** – This group is selected by audition. They will rehearse with top students from Lake County and present a concert in the fall.
- **Solo and Ensemble Festival** – Students interested prepare a music selection for district level evaluation in February. Those who earn a Superior (playing Grade V or higher) will qualify for the State Solo and Ensemble Festival in April.

FULL BAND CAMP

Dates Posted by mid-April or sooner for planning purposes.

Band Camp will be held every year during the summer. **Participation is mandatory** for any individual who intends to participate in the band program. It is not possible to make up the concepts missed at band camp and students who miss band camp rarely earn a spot in the Competition Show. They may be able to earn a spot in the Pre-Game Show.

ROOKIE CAMP

Rookie Camp will be held the week prior to Full Camp. Participation is required for officers and all students new to the Band Program. It is strongly suggested for all second year members.

PERCUSSION/ GUARD CAMP

Percussion and Guard camps are held prior to full band camp for the acquisition of essential techniques and concepts needed in marching season. These rehearsals are expectations of the membership and required to ensure that we are giving the best instruction possible in the least restrictive environment.

BAND ORGANIZATIONS

THE SWARM OF SOUND (MARCHING BAND)

- **Rehearses Tuesday 5:30 to 8:30 and Thursday 5:30 to 7:30 in Fall Semester**
- **Personnel**
 - All students enrolled in Band classes
- **Exemptions**
 - Exemptions from Marching Band are allowed for the following reasons:
 - **Fall (August, September, October) Varsity Sports participation as approved by the Director(s)**
 - Students are still required to be enrolled in an ensemble class.
- **Activities**
 - Rookie/Percussion/Guard Camp
 - Band Camp – Pre-Season Marching Week
 - Football Game Performances and Pep Rallies
 - FBA District Marching Festival/Evaluation
 - FMBC State Marching Championships
 - Selected Marching Contest(s)
 - Public Service Performances
 - Parades
- **Units of Membership**
 - Winds – Brass & Woodwinds
 - Percussion – Front Ensemble and Battery
 - Color guard
 - Drum Major(s)

WIND SYMPHONY & SYMPHONIC BAND

Students are divided between the two Bands by the Director(s)

*** Spring Concert Ensemble assignments will be made based on Semester Exam evaluations in October. ***

- **Personnel**
 - **Wind Symphony**
 - Rehearses Tuesday 5:30 to 8:30 in the Spring
 - Performs Advanced High School and Early Collegiate Literature
 - **Symphonic Band**
 - Rehearses Thursdays in the Spring
 - Performs Significant High School Literature
- **Activities**
 - Winter Concert/Lights of Lake
 - Pre-Festival (District) Concert
 - FBA District Concert Festival/Evaluation
 - PRISM Concert
 - FBA State Festival/Evaluation (when qualified)
 - Graduation Performance (Wind Symphony and Symphonic Winds Combined)
 - other

JAZZ ENSEMBLE

- **Personnel**
 - **Wind Section members are required to be enrolled in an concert ensemble class.**
 - **This is a full year commitment**
- **Activities**
 - Community/Scholastic Gigs
 - Festivals
 - Lakeside, FSU, etc
 - FBA District and State Evaluations (when qualified)
 - Fall/Spring Concerts
 - Other

COLOR GUARD/WINTER GUARD

- For any students with dance/twirling experience
- **This is a full year commitment**
- Color Guard members are encouraged to play their instrument during the Spring semester

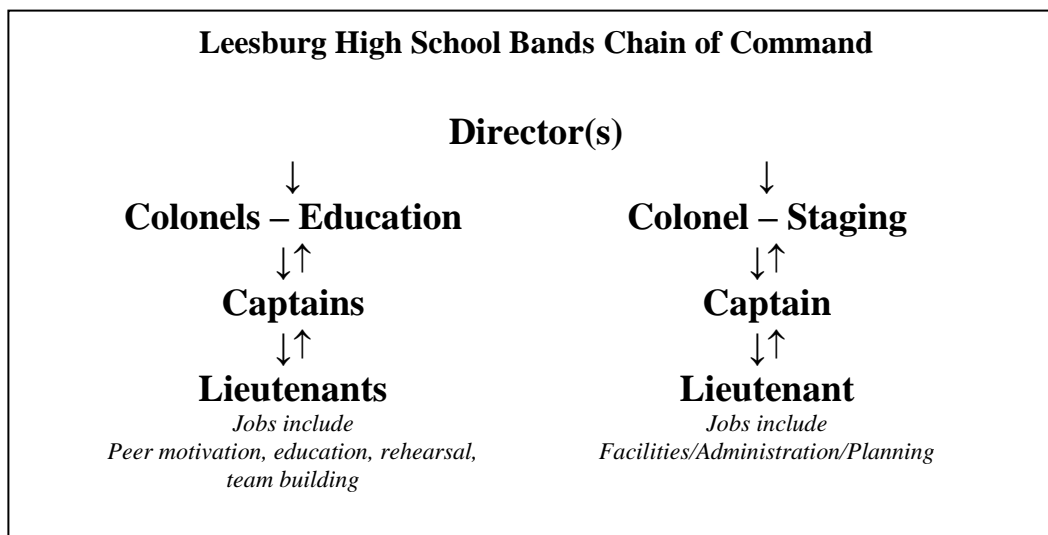
PERCUSSION ENSEMBLE

- For any instrumentalist and all percussionists who wish to further their technical and musical understanding of percussion.
- **This is a full year commitment**

BEGINNING BAND

- For any individual who wishes to learn the fundamentals of playing an instrument
- Requires purchase/rental of:
 - Instrument
 - Method Book
 - Specialty Shirt / Uniform
 - Supplies
- **This is a full year commitment**

OFFICERS AND LEADERSHIP



Student officers are selected on the basis of the following criteria: Leadership, Setting a Positive Example, Dependability, Punctuality, Exhibiting STING, Musical Achievement (All-District, All-State, Solo & Ensemble Festival, etc.), Conduct Record, Point Record and Audition Process. The Officers assist the Director(s) in the duty areas designated below:

NOTE: ALL OFFICERS MUST SET THE EXAMPLE!

- Maintain a positive, responsible attitude
- Arrive at least 15 minutes early to all events
- Attend the scheduled Officer meeting
- Self-dismissed last from activities
- Maintain a 2.0 GPA (academic eligibility)
- Be consistently punctual
- Avoid school disciplinary action
- Study privately, if possible
- Exhibit STING
- Be Consistent

“THREE STRIKES” CLAUSE

Failure to meet any of the above requirements will result in a reprimand by the Director(s). A reprimand will be called a “Strike”. An Officer receiving three “Strikes” is subject to removal from office.

COLONELS - EDUCATION

- Supervise and assist other Officers.
- Assist Director(s) with rehearsals as needed
- Supervise/Monitor large groups/entire band
- Promote positive feelings
- Be familiar with all Officer Duties
- Coordinate other Officers
- Conduct rehearsals when needed
- Exhibit STING at all times
- Assist Director(s) in teaching drill
- Attend Summer Leadership Camp
- Conduct all marching performances (Drum Majors Only)
- Synthesize concise reports on Officers/Students

CAPTAINS AND LIEUTENANTS - EDUCATION

- Assist in checking roll at each rehearsal and performance
- Conduct Inspection before performance and submit infraction to Admin Captain
- Conduct section rehearsal scheduled by Director(s) in a mature and responsible manner
- Promote positive feelings in your Section
- Be the role model in your Section (playing, marching, attitude, etc)
- Make sure that your Section follows all Expectations
- Regularly conduct instrument accessory Inspection (acceptable mouthpiece, at least 3 working reeds, pencil in folder, proper music, etc.)
- Constantly monitor your Section for following Rules of Rehearsal (proper warm-up, posture, no talking, knowing music, no gum, etc.)
- Responsible for attendance at each rehearsal
- Have ready bullet point phrases to assist with the rehearsal (“Focus,” “Mark it!,” etc)

COLONEL/CAPTAIN - STAGING

- Promote positive feelings
- Coordinate Social Events
- Maintain Big Brother/Big Sister Program
- Make sure all jobs are carried out and report infractions to Director(s)
- In the Event of absences, make sure the job is covered
- After each Performance, check the Band Room for misplaced uniform parts, instruments, music, coolers, etc
- Coordinate with Education Colonels in the event additional personnel are needed.
- Be responsible for equipment at practice/rehearsal
- Load/unload equipment for trips as assigned
- Check instruments/equipment in or out as directed
- Maintain organization of chairs and stands in Band Room
- Maintain organization and condition of Instrument Room
- Carry to field (and set up) podium, field markers, poker chips, etc.
- Create a schedule for maintenance of school instruments, equipment, practice areas, etc.
- Maintain Inventory of instruments/equipment
- Maintain Inventory of (music) Library and supervise Librarians
- Develops system for student needed copies and completes as necessary
- Assist Director(s) with various paperwork assignments
- Maintain a LOST/FOUND box emptying once a week – all School/Uniform/Instrument items will be kept and put away – all personal articles will be thrown away or donated to Charity.
- Other as assigned

LIEUTENANTS/CREW/EQUIPMENT MANAGERS - STAGING

- Confiscate any music or folders left out of place and turn in the name of the student to the Colonel/Captain
- Assist in checking Maintain organization/condition of music and library
- Check daily with Director(s)/Colonel/Captain for work to be done
- Perform all duties listed under the Staging section above

RULES, GUIDELINES, AND POLICIES

- Students must abide by the Lake County Schools Code of Student Conduct, Leesburg High School Student Rules, and the LHS Band Handbook.
- A Level III or higher disciplinary infraction may result in subsequent suspension from Band Activities or removal from the Program
- Miscellaneous Rules
 - ◆ Any instrument or equipment not belonging to or specifically assigned to you is strictly off limits.
 - ◆ During the regular school day, the band facility is to be used for regular classes, Sectionals, Rehearsals, and pre-arranged help sessions only. **The area is off limits during lunch unless you are notified otherwise.**
 - ◆ No gum, food, or drink (*water is allowed*) is allowed in the band facility.
 - ◆ No gum is allowed at any performance or rehearsal or while in uniform or under uniform.
 - ◆ For security reasons, the Band room is off limits to non-Band students.

REHEARSAL PROCEDURES – ALL BAND MEMBERS

Storage of school books – You may use the areas provided in the Band Room while you are in Band classes only. *The Band Facility will not serve as your school locker.* If you need it for another class, don't leave it.

Rehearsals in the Band Room

1. Required Equipment – Instruments in good working order, no less than 3 playing reeds, necessary mutes music in order, pencil, etc.
2. Before rehearsal begins, you may warm up individually (long tones on low notes and scales) until Director(s) steps in front of the ensemble. At the moment, all playing and talking will stop.
3. Correct posture is essential to proper breathing and will be required at all times. Sit on the edge of your chair with shoulders relaxed and head held high. Percussionists **must stand** when playing.
4. If you need to ask a question during band rehearsal, raise your hand and wait to be recognized. Otherwise, there will be no talking during rehearsal.

Marching Rehearsals

1. Check board for any specified music and equipment needed.
2. Go directly to practice field. The Band Room will be locked 5 minutes before the start of rehearsal. **DO NOT BE LATE**
3. The Drum Majors and Colonels have authority until the arrival of the Director(s) and/or staff.
4. One long whistle as a warning signal. This signifies that you have 60 seconds to get into warm up position. When the 2nd whistle is blown, those not in positions at this time will be reported by their Lieutenants as Tardy. Lieutenants not in position will be reported to the Colonels or Drum Majors as tardy.
5. No playing to and from the practice field.
6. Marching band shoes or sneakers must be worn at all times. No sandals, flats, pumps, boots, etc. are allowed.
7. Alertness is required and one should react immediately to all commands and instructions.
8. Marching Rehearsals will be most efficient if all members are diligent in correcting mistakes quickly and thinking ahead to the next move. Above all, take pride in every minute of rehearsal so that we can all take pride in our final product – **THE PERFORMANCE.**

PERFORMANCES

- All members are expected to attend every engagement in which the Band or any segment of the band participates. Exception (Winter Guard, Concert MPA)
 - No band member is permitted to leave the organization in advance of group dismissal at any time unless excused by the Director(s) prior to the performance.
 - Regulations regarding rehearsals are also in effect during all public performances.
 - For out of town engagements, the Band travels as a unit unless they have been otherwise directed. Each band member is personally responsible for all of his own equipment, whether school or personally owned. For all out of town engagements, no band member may travel in a private car without the consent of the Director(s).
 - Band members must report to the designated place at the time stated in order to prepare for performance.
 - Information regarding each performance will be posted in advance in the Band Room. It is the responsibility of each individual member to keep himself/herself informed of all notices and scheduled events.
-

TRAVEL

- Transportation will be provided or approved by the school. All members must travel with the band.
 - When traveling on school buses, each band member is responsible for placing instruments/equipment to be loaded on the Equipment Vehicle in the designated loading area. Smaller instruments (flutes, clarinets, etc) will be carried on the school buses.
 - When traveling on charter buses, place instrument/equipment on the curb next to your bus or as directed. Loading crew will load the cargo bays. (flutes and clarinets will be carried on the bus.)
 - All students must ride the buses they signed up for. If specific seats are assigned there will be no changes in these assignments.
 - Chaperones will be assigned to each bus. Chaperones will be placed strategically at the front, middle, and rear of the bus. Each bus will have radio/cell phone contact to the Director(s) who may or may not be on Bus 1. All Chaperones must be on approved volunteer status with the Lake County School Board. One Officer will be assigned to each bus to check roll and report results to the Director(s).
 - Standard Rules of Conduct for school buses are in effect for all trips.
 - No cross-gender seating allowed. When students are 2 to a seat, they must be of the same gender. Couples must be separated.
 - Upon arrival, everyone will remain seated on the buses until the Band Director(s) gives the signal to unload.
-

OVERNIGHT TRIPS

- Room assignments will be made in advance.
 - All school and Band rules will be in effect plus the following:
 - No boys in girls' rooms and vice versa...EVER.
 - Keep sound levels at a minimum
 - Do not leave the motel/hotel grounds unless directed to do so by the Director(s)
 - Never ride in a private automobile without specific permission from the Director(s).

- Curfew will be strictly observed.
- Any infraction of the Rules will result in the offending student(s) being sent home. Other disciplinary action will follow.

SCHOOL INSTRUMENTS

A limited number of school owned instruments and specific marching brass and percussion instruments are available for student use. In order to check one of these instruments out, the student must check the instrument out with the Band Director(s) in an Agreement which allows the student to use the instrument with the Stipulation that he/she is financially responsible for any damages or loss incurred during the usage period. In the case of dual use instrument (where two or more individuals use the same instrument) damage should be reported instantly. In cases where the damage cannot be proven, both students will share financial responsibility for the repairs.

CONCERT UNIFORM INFORMATION

The concert uniform consists of:

1. black tuxedo shirt
2. black tuxedo pants (ladies have the option of a tea length skirt)
3. black bowtie
4. black cummerbund

Any student in the Symphonic Band or Wind Ensemble will need to have this outfit. This year it is included as part of the band fee.

COST OF INDIVIDUAL ITEMS

Bowtie - \$8.00

Cummerbund - \$12.00

Shirt - \$20.00

Pants - \$30.00

Skirt (optional) - \$30.00

- **Complete Package (includes pants, shirt, tie, and cummerbund) - \$60.00**
- **Freshmen will receive the total package as part of their Rookie Fee**

Please note:

The concert uniforms are a non-consumable, personal item. The uniforms become the property of the students and are theirs to keep. Properly maintained, these items will last the remainder of a student's high school band career (they are only worn 7 times per year). For this reason, these items are not covered by the Fair Share program.

ATTENDANCE, GRADES, & DISCIPLINE PHILOSOPHY

Simply Put: You can only earn points toward your final grade if you are present.

Rationale: Band is a performance based course. Students rarely receive at-home bookwork (i.e. homework). Students earn a grade based on participation and quality of participation at all events.

FOR ALL ABSENCES, THE DIRECTOR(S) MUST BE NOTIFIED A MINIMUM OF 2 WEEKS IN ADVANCE USING THE LHS BANDS ATTENDANCE EXCEPTION FORM (ON WEBSITE) OR A GRADE REDUCTION IS GUARANTEED.

ATHLETES MUST SUBMIT A FORM WITH THE ENTIRE SPORT CALENDAR ATTACHED FOR YOUR SPORT TO BE ELIGIBLE FOR 50/50. THIS IS TO ENHANCE OUR TEAM'S ABILITY TO PLAN FOR YOUR ABSENCE – IF YOU FAIL TO PLAN YOU WILL PUT YOURSELF AND YOUR TEAM IN AN UNFORTUNATE POSITION WHICH USUALLY ENDS IN SELF-DISMISSAL FROM THE PROGRAM.

The Director(s) reserve(s) the right to issue any of the following consequences or any combination thereof for persistent problems.

1. Grade Deduction
2. Dismissal from Active Duty in the Band Program (maximum final class grade of D)
3. Dismissal for remainder of season (maximum class grade of D)
4. Suspension for 1 or more performances (maximum class grade of B)
5. Suspension from Practice – points will not be made up
6. Permanent loss of spot in show (maximum class grade of C)
7. Temporary loss of spot in show
8. Detention
9. Research Paper
10. Written Sentences
11. Essay of Explanation
12. Drop 1 letter grade (example: grade would drop from B to C)
13. Physical Exercise (Running the track, Push-ups, etc.)
14. Removal from any position (soloist, officer, etc.)
15. Parent supervision required at all events in order for student to participate.
16. Other

SPECIAL CONSIDERATIONS AND EXCEPTIONS TO ANY OF THE ABOVE RULES *WILL ONLY BE CONSIDERED* WHEN ACCOMPANIED BY A NOTE FROM THE PARENTS OF THE STUDENT AND, IN CASES INVOLVING A PHYSICAL CONDITION, A DOCTOR.

LHS BANDS WATER/FOOD/PARTICIPATION POLICY

Students will receive a brief water/rest break every 20-25 minutes at outdoor band rehearsals during marching activity. During outdoor music rehearsals students will receive brief water breaks at less frequent intervals depending on the heat index and condition of the students.

During periods of strenuous physical activity (ex: marathon running in summer), athletes need approximately 20 ounces of water every fifteen minutes. Band is considerably less strenuous and 20-40 ounces of water per hour is sufficient for this type of activity. Band students spend a majority of their time standing or walking.

Guidelines

Parents and students are requested to plan accordingly to ensure proper hydration prior to band practices. The following guidelines should be observed beginning 24 hours before band practice.

- Sodas, salty foods, and caffeinated beverages should be avoided.
- Fruits, vegetables, water, sports drinks, and cooked pasta or other high water content foods, are encouraged in order to properly hydrate before practice.
- Eating is essential to provide energy for band practice. There are no substitutions for a proper breakfast and lunch.
- Students without appropriate water or who have not eaten that day may not be allowed to practice and will not be able to make up points.
- Students who repeatedly sit out may not be allowed to participate in a full time spot and may be referred to seek medical attention before being allowed to participate in marching band. Maximum grade of C will be awarded. This is a co-curricular, performance based class.
- All students are required to have medical insurance. Medical insurance is available through the front office. The cost is usually under \$10 and covers all school activities.

Students are *required* to provide coolers with water for practices and may store those coolers in the band room on Thursdays before afternoon practice. The band room is opened to students at 7:15am.

Students who have *dramatic and significant* financial hardships should seek assistance directly with the Band Director(s) and not through other students/parents. Students who need additional water breaks should be aware that a portable water device called a “Camel Pack” is available at most sporting goods stores and is encouraged for field use.

The Leesburg High School Swarm of Sound Presents:

Marching Band: Sport of the Arts

A Parent's Guide on handling the

Time Commitment

*Marching Season runs concurrently with Football Season here at LHS and is the equivalent of an athletic team. The Leesburg High School Band is in its 85th season and is the **largest student organization** on campus with **120 members** from every walk of life. These students represent nearly every organization and athletic team on campus. They are future leaders who experience success by surrounding themselves with other successful people. Any prior ideas of a “nerdy band member or band geek” are best checked at the door – those thoughts do not represent this high school program.*

All Band Members are Required to Be Part of the Marching Band

***Exceptions:** Varsity Football Players, Varsity Cheerleaders, and Varsity Volleyball Players, as well as those approved for Light Duty Marching Band (one season only – special permission from band director). The band shares members with athletics as part of a 50/50 program of time sharing and all students can participate in sports (most are encouraged to).*

Students will earn the required Fine Arts Credit upon successful completion of the academic year and the achievement of a C or higher – every student must have this credit to graduate high school.

After Marching Season - the time commitment becomes extremely light.

Marching season ends the first weekend in November and instead of 10 hours of commitment per week, the students have 2.5 hours for the remainder of the school year. Many use this time for Winter/Spring sports and part-time jobs.

Grading Policy

The grading policy here is very simple: Just as in the workplace, a student cannot get “paid” for hours not worked. Similarly, for unapproved absences and tardies from band events, students will not receive full points. My goal is to help parents raise future adults, not future dependents. The only problems that ever occur are from ignoring the published calendar, “accidental scheduling mistakes,” and assuming that your child deserves an exception.

Band members who earn an “A” schedule orthodontist appointments, driver’s license appointments, job interviews, doctor’s appointments, piano lessons, visits to Grandma’s House, birthday parties, babysitting and all other conflicts *on non-Band days*. This is not an ego trip on the part of the band program, rather students learn very quickly that the performance and image of **their** band suffers every time a person is missing. As a result they are quickly self-motivated to be on time - always ready and present. If they are upset about a scheduling conflict or being late, *believe them!* We want today’s teenager to show they care about something and most members come to value their band a great deal.

The creation of successful children occurs at home. All of our wonderful, talented, smart, and successful band members are a result of their parents. We are thankful for you. Join us in sending a common message to these wonderful young people that “anything worth doing is worth doing right.”

A Parent's Guide to

Fair Share

“I’ve heard Band is expensive...just how much money *will* come out of my pocket?”

Fair Share is the total expected fundraising contribution for each student and covers every single expense that is a non-consumable item. Any items that students personally keep are not covered by Fair Share. It is every student’s slice of the pie. With 20 or more optional fundraisers, this total is easy to achieve.

If you remember nothing else about Fair Share, remember this:

Fair Share is designed to be TOTALLY and EASILY FUNDRAISED.

I was once a band member. I was nickel-and-dimed for everything all year long and REQUIRED to participate in fundraisers. As a kid, I hated door to door sales. As a band director, I thought: wouldn’t it be nice to be up front with the total spent per child, per year?” Start the year saying: “Here are easy and convenient ways to fundraise this amount” and “You don’t want to fundraise? That’s cool...just send in a check...deduct it from your taxes....” Fair Share is the best way to get us from point A to point B and ensures that No Child is Left Behind, and more importantly, everyone is equally responsible.

Example Budgets

Budget Category	2008-2009 Expenditures	2009-2010 Expenditures
New Instruments/Uniform Purchase	\$7,700.00	\$7,700.00
Marching Show Expenses	\$3,888.97	\$4,700.00
Operations	\$10,260.01	\$5,100.00
Concessions Expenditures/Food Stocking	\$12,097.93	\$10,000.00
Transportation	\$12,217.68	\$20,000.00
Masterclasses/Clinics/Sectional Instruction	\$9,665.00	\$8,400.00
District/State Assessments and Entry Fees	\$6,673.88	\$4,050.00
Uniform Maintenance, Replacement	\$12,483.00	\$15,000.00
Color Guard	\$17,461.44	\$16,800.00
Uncollectible Funds	\$11,092.50	\$7,400.00
5% Reserve Fund for Capital Improvements	\$4,122.39	\$5,000.00
TOTALS	\$107,662.79	\$104,150.00

Total FAIR SHARE per Student = \$500

Frequently asked Questions or “Just the FAQ’s, please”

Will Fair Share pay for my child’s clarinet reeds, band shoes, and/or concert uniform, makeup, hair ties, socks?

- **No** – Donations are made to the band program *on behalf* of a student. We are not allowed to use them for personal items for that student.

How much money is in “my child’s account”?

- **None** – we track each student’s contribution to the program. At no point are there individual student accounts.

Can I use extra money raised this year for _____? (personal item, non-band related musical experience)

- **No** – please keep in mind that these funds are donations made to the LHS Band Program *on behalf* of each student. At no point does the money belong to the student or parent. If family members are going to make direct donations, please have them sent to you, then send in a check. If a student continues raising money for the band, those funds will go to further help students with less supportive parents. A dedicated and hard working student or parent may also select another student to help.

Come on, I thought the County and School paid for everything...

- **Really?**

The Leesburg High School Swarm of Sound Presents:

A Parent's Guide to

Out of Pocket Expenses

“Okay, so *this* is what we cannot fundraise for...”

Definitions (“which category do I fit in?”):

Rookie – a new brass or woodwind player in the band

Rookie Percussionist – a new percussionist in the band

Guard Member – one who spins something (rifle, flag, sabre, etc)

Returning Band Member – any brass or woodwind player

Returning Percussionist – any returning percussionist

Rookie Band Fee \$100

ONLY for new Wind Players

Here is what you get:

- Rookie Camp \$15
- Band Camp \$20
- Special Guest Instructors \$20.00
- Concert Season Uniform (tuxedo pants, tuxedo shirt, bowtie, cummerbund) \$60.00
- New Marching Shoes \$25.00
- Under/Practice Uniform (t-shirt, shorts, bag, hat) \$40.00
- Sheet Music \$5.00
- Drill Charts \$2.00
- Flip Folder \$7.50
- Lyre \$7.50
- Dot Book \$0.58
- Marching Uniform Cleaning Fees \$21.00

Rookie Percussion Fee \$140

ONLY for NEW Percussionists

Here is what you get:

- Percussion Camp
- Band Camp
- Guest Instructors
- Concert Season Uniform (begins in November)
- New Marching Shoes
- Under/Practice Uniform (t-shirt, shorts, ball cap)
- Music
- Drill Charts
- Music Folder with protective sheets
- Dot Book
- Mallets and Sticks
- Instrument Rental
- Marching Uniform Cleaning Fees

Percussion Fee \$100

ONLY for Returning Percussionists

- Percussion Camp
- Band Camp
- Guest Instructors
- Under/Practice Uniform (t-shirt, shorts, ball cap)
- Music
- Drill Charts
- Music Folder with protective sheets
- Dot Book
- Mallets and Sticks
- Instrument Maintenance Fee
- Marching Uniform Cleaning Fees

Guard Personal Items Fee

With Wind Suit, full embroidery - \$200

Without Wind Suit - \$140

All Guard Members

- Specialized Instructors
- Wind suit (if selected)
- Marching/Dance Shoes
- Appropriate Make Up
- Under Uniform (black t-shirt and gray t-shirt, shorts)
- Accessories/costume parts/etc
- **Practice Flag/Pole**
- Uniform Cleaning/Usage Fee

Band Fee \$100

ONLY for Returning Band Members

- Band Camp
- Special Guest Instructors
- Under/Practice Uniform
- Sheet Music
- Drill Charts
- Flip Folder
- Lyre
- Dot Book
- Marching Uniform Cleaning Fees

BAND INFORMATION:**(352) 728-3739*****www.swarmofsound.com***

**Some of you might have my cell phone number...
...It is for emergency use only and not to be shared or used otherwise.
Thank you.**

E-MAIL:**Mr. Fielder fielderg@lake.k12.fl.us**